

### MATERIAL SAFETY DATA SHEET (MSDS)

#### SECTION 1: Identification of the substance/mixture and of the company/undertaking

##### 1.1. Product identifier

Product form : Substance

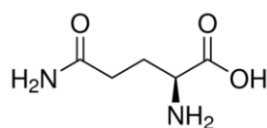
:

CAS-No. : 56-85-9

Product code : 03960

Formula : C<sub>5</sub>H<sub>10</sub>N<sub>2</sub>O<sub>3</sub>

Chemical structure :



##### 1.2. Relevant identified uses of the substance or mixture and uses advised against

###### 1.2.1. Relevant identified uses

Industrial/Professional use spec : Industrial  
For professional use only

###### 1.2.2. Uses advised against

No additional information available

##### 1.3. Details of the supplier of the safety data sheet

SPAN LAB  
UNIT NO. 14, SKY INDUSTRIAL ESTATE, WALIV, VASAI (E)  
401208 Mumbai - INDIA  
PH: +91 9820509929  
[info@spanlab.in](mailto:info@spanlab.in) [www.spanlab.in](http://www.spanlab.in)

#### SECTION 2: Hazards identification

##### 2.1. Classification of the substance or mixture

Classification according to Regulation (EC) No. 1272/2008 [CLP]

Not classified

Classification according to Directive 67/548/EEC [DSD] or 1999/45/EC [DPD]

Not classified

# L-GLUTAMINE FOR BIOCHEMISTRY

## Safety Data Sheet

### Adverse physicochemical, human health and environmental effects

No additional information available

### 2.2. Label elements

#### Labelling according to Regulation (EC) No. 1272/2008 [CLP]

No labelling applicable

### 2.3. Other hazards

No additional information available

## SECTION 3: Composition/information on ingredients

### 3.1. Substances

Name : L-GLUTAMINE FOR BIOCHEMISTRY  
CAS-No. : 56-85-9

Full text of R- and H-statements: see section 16

### 3.2. Mixtures

Not applicable

## SECTION 4: First aid measures

### 4.1. Description of first aid measures

First-aid measures after inhalation : Remove person to fresh air and keep comfortable for breathing.  
First-aid measures after skin contact : Gently wash with plenty of soap and water. Wash contaminated clothing before reuse.  
First-aid measures after eye contact : Rinse cautiously with water for several minutes. Remove contact lenses, if present and easy to do. Continue rinsing.  
First-aid measures after ingestion : Rinse mouth. Do not induce vomiting.

### 4.2. Most important symptoms and effects, both acute and delayed

No additional information available

### 4.3. Indication of any immediate medical attention and special treatment needed

Treat symptomatically.

## SECTION 5: Firefighting measures

### 5.1. Extinguishing media

Suitable extinguishing media : Water spray. Foam. Dry powder. Carbon dioxide.  
Unsuitable extinguishing media : Do not use a heavy water stream.

### 5.2. Special hazards arising from the substance or mixture

No additional information available

# L-GLUTAMINE FOR BIOCHEMISTRY

## Safety Data Sheet

### 5.3. Advice for firefighters

Protection during firefighting : Do not enter fire area without proper protective equipment, including respiratory protection.

## SECTION 6: Accidental release measures

### 6.1. Personal precautions, protective equipment and emergency procedures

#### 6.1.1. For non-emergency personnel

Emergency procedures : Evacuate unnecessary personnel.

#### 6.1.2. For emergency responders

Protective equipment : Use personal protective equipment as required.

Emergency procedures : Ventilate area.

### 6.2. Environmental precautions

Avoid release to the environment.

### 6.3. Methods and material for containment and cleaning up

Methods for cleaning up : Collect spillage. On land, sweep or shovel into suitable containers.

### 6.4. Reference to other sections

No additional information available

## SECTION 7: Handling and storage

### 7.1. Precautions for safe handling

Precautions for safe handling : Avoid contact with skin and eyes. Do not breathe vapours.

Hygiene measures : Wash hands and other exposed areas with mild soap and water before eating, drinking or smoking and when leaving work.

### 7.2. Conditions for safe storage, including any incompatibilities

Storage conditions : Keep container tightly closed.

### 7.3. Specific end use(s)

No additional information available

## SECTION 8: Exposure controls/personal protection

### 8.1. Control parameters

No additional information available

### 8.2. Exposure controls

Hand protection : Protective gloves

Eye protection : Chemical goggles or safety glasses

Skin and body protection : Wear suitable protective clothing

Respiratory protection : [In case of inadequate ventilation] wear respiratory protection.

## SECTION 9: Physical and chemical properties

### 9.1. Information on basic physical and chemical properties

Physical state : Solid

# L-GLUTAMINE FOR BIOCHEMISTRY

## Safety Data Sheet

Molecular mass	: 146.15 g/mol
Colour	: White powder.
Odour	: odourless.
Odour threshold	: No data available
pH	: 5 - 6 at 14.6 g/l at 25 °C
Relative evaporation rate (butylacetate=1)	: No data available
Melting point	: 185 °C
Freezing point	: No data available
Boiling point	: No data available
Flash point	: No data available
Auto-ignition temperature	: No data available
Decomposition temperature	: No data available
Flammability (solid, gas)	: No data available
Vapour pressure	: No data available
Relative vapour density at 20 °C	: No data available
Relative density	: No data available
Solubility	: Water: 14.6 g/l at 20 °C - completely soluble
Log Pow	: -4.069
Viscosity, kinematic	: No data available
Viscosity, dynamic	: No data available
Explosive properties	: No data available
Oxidising properties	: No data available
Explosive limits	: No data available

### 9.2. Other information

No additional information available

## SECTION 10: Stability and reactivity

### 10.1. Reactivity

No additional information available

### 10.2. Chemical stability

Stable under normal conditions.

### 10.3. Possibility of hazardous reactions

No additional information available

### 10.4. Conditions to avoid

Direct sunlight. Extremely high or low temperatures.

### 10.5. Incompatible materials

No additional information available

# L-GLUTAMINE FOR BIOCHEMISTRY

## Safety Data Sheet

### 10.6. Hazardous decomposition products

No additional information available

## SECTION 11: Toxicological information

### 11.1. Information on toxicological effects

Acute toxicity : Not classified

Skin corrosion/irritation : Not classified  
pH: 5 - 6 at 14.6 g/l at 25 °C

Serious eye damage/irritation : Not classified  
pH: 5 - 6 at 14.6 g/l at 25 °C

Respiratory or skin sensitisation : Not classified

Germ cell mutagenicity : Not classified

Carcinogenicity : Not classified

Reproductive toxicity : Not classified

STOT-single exposure : Not classified

STOT-repeated exposure : Not classified

Aspiration hazard : Not classified

## SECTION 12: Ecological information

### 12.1. Toxicity

No additional information available

### 12.2. Persistence and degradability

No additional information available

### 12.3. Bioaccumulative potential

#### L-GLUTAMINE FOR BIOCHEMISTRY (56-85-9)

Log Pow	-4.069
---------	--------

### 12.4. Mobility in soil

No additional information available

### 12.5. Results of PBT and vPvB assessment

No additional information available

# L-GLUTAMINE FOR BIOCHEMISTRY

## Safety Data Sheet

### 12.6. Other adverse effects

No additional information available

## SECTION 13: Disposal considerations

### 13.1. Waste treatment methods

No additional information available

## SECTION 14: Transport information

In accordance with ADR / RID / IMDG / IATA / ADN

### 14.1. UN number

UN-No. (ADR)	: Not applicable
UN-No. (IMDG)	: Not applicable
UN-No. (IATA)	: Not applicable
UN-No. (ADN)	: Not applicable
UN-No. (RID)	: Not applicable

### 14.2. UN proper shipping name

Proper Shipping Name (ADR)	: Not applicable
Proper Shipping Name (IMDG)	: Not applicable
Proper Shipping Name (IATA)	: Not applicable
Proper Shipping Name (ADN)	: Not applicable
Proper Shipping Name (RID)	: Not applicable

### 14.3. Transport hazard class(es)

#### ADR

Transport hazard class(es) (ADR)	: Not applicable
----------------------------------	------------------

#### IMDG

Transport hazard class(es) (IMDG)	: Not applicable
-----------------------------------	------------------

#### IATA

Transport hazard class(es) (IATA)	: Not applicable
-----------------------------------	------------------

#### ADN

Transport hazard class(es) (ADN)	: Not applicable
----------------------------------	------------------

#### RID

Transport hazard class(es) (RID)	: Not applicable
----------------------------------	------------------

### 14.4. Packing group

Packing group (ADR)	: Not applicable
Packing group (IMDG)	: Not applicable
Packing group (IATA)	: Not applicable
Packing group (ADN)	: Not applicable
Packing group (RID)	: Not applicable

### 14.5. Environmental hazards

Dangerous for the environment	: No
Marine pollutant	: No
Other information	: No supplementary information available

# L-GLUTAMINE FOR BIOCHEMISTRY

## Safety Data Sheet

### 14.6. Special precautions for user

#### - Overland transport

No data available

#### - Transport by sea

No data available

#### - Air transport

No data available

#### - Inland waterway transport

No data available

#### - Rail transport

No data available

### 14.7. Transport in bulk according to Annex II of MARPOL 73/78 and the IBC Code

Not applicable

## SECTION 15: Regulatory information

### 15.1. Safety, health and environmental regulations/legislation specific for the substance or mixture

#### 15.1.1. EU-Regulations

No REACH Annex XVII restrictions

L-GLUTAMINE FOR BIOCHEMISTRY is not on the REACH Candidate List

L-GLUTAMINE FOR BIOCHEMISTRY is not on the REACH Annex XIV List

#### 15.1.2. National regulations

##### Germany

Reference to AwSV : Water hazard class (WGK) 1, low hazard to water (Classification according to AwSV; ID No. 6704)

12th Ordinance Implementing the Federal Immission Control Act - 12.BImSchV : Is not subject of the 12. BImSchV (Hazardous Incident Ordinance)

##### Netherlands

SZW-lijst van kankerverwekkende stoffen : The substance is not listed

SZW-lijst van mutagene stoffen : The substance is not listed

NIET-limitatieve lijst van voor de voortplanting giftige stoffen – Borstvoeding : The substance is not listed

NIET-limitatieve lijst van voor de voortplanting giftige stoffen – Vruchtbaarheid : The substance is not listed

NIET-limitatieve lijst van voor de voortplanting giftige stoffen – Ontwikkeling : The substance is not listed

# L-GLUTAMINE FOR BIOCHEMISTRY

## Safety Data Sheet

### 15.2. Chemical safety assessment

No additional information available

### SECTION 16: Other information

*This information is based on our current knowledge and is intended to describe the product for the purposes of health, safety and environmental requirements only. It should not therefore be construed as guaranteeing any specific property of the product*